



Guide Price £270,000

2 Bedroom Maisonette for sale
43 Newmarket Street, Norwich





Overview

Prepare to be captivated by the cosy charms of this unique and convenient homestead. Brilliant positioning and bountiful features throughout, this home has it all! Click here to book – we're open 24/7 to arrange the appointment around you.



Key Features

- 2-Bedroom Maisonette
- 962 Year Lease - No Ground Rent or Maintenance Charge
- Planning in Place for a First Floor Sun Terrace
- One Off-Street Parking Space
- Modern Kitchen and Shower Room
- Substantial Principal Bedroom and Ample Storage Throughout
- Walking Distance to City Centre
- Viewings Readily Available





Welcome to Newmarket Street, Norwich. This unique maisonette comes beautifully appointed and presented, ready to charm and delight. Bright, characterful spaces, alongside storage aplenty, you will be pleasantly surprised by what such a layout can offer.

A bountiful ground-floor offers the best of both worlds with open plan living-dining and a cosy snug serving all occasions. The kitchen space is designed with ample worktop and storage, with the sink placed at the window and a full-height cupboard perfectly located to serve as a desirable pantry.

A feature spiral staircase opens to a galleried landing (lots to talk about here...) leading to a splendid principal bedroom with dual-aspect windows, a cute second bedroom and a modern shower room. As the floor plan indicates, a tilt and turn balcony door is already fitted in readiness for your sun terrace.

To the front of this home is enough space to create a seating area to watch the world go by and to park a vehicle off-street. If typical terraces are not your look, this is right up your street!

Walking distance to the city centre, everything you could possibly need is catered for. While closer to home, enjoy an evening beverage to Sunday lunch at any one of the pubs locals are very fond of.

We look forward to showing you this special home.

What3Words: ///pint.pipes.bucks



Snug

14' 5" x 7' 0" (4.40m x 2.15m)

Hard flooring, uPVC double-glazed window with fitted Venetian blind, ceiling light, radiator and multiple sockets.

Lounge-Diner

17' 2" x 10' 11" (5.25m x 3.35m)

Laminate flooring, uPVC double-glazed window with fitted Venetian blind, two ceiling lights, coving, radiator and multiple sockets.

Kitchen and Utility Space

19' 0" x 7' 8" (5.80m x 2.35m)

Laminate flooring, uPVC double-glazed window with fitted Venetian blind, full-height storage cupboard, fitted base and wall-mounted units, ample worktop, integrated electric oven, extractor hood, fridge and freezer, plumbing and space for a washing machine and tumble drier, ceiling lights, coving, splashback tiling, vertical radiator, multiple sockets and spiral staircase.

Bedroom One

14' 3" x 13' 5" (4.35m x 4.10m)

Fitted carpet, dual uPVC double-glazed windows with fitted Venetian blinds, coving, radiator, dimmable ceiling light, two alcoves for storage and multiple sockets.

Bedroom Two

8' 2" x 6' 6" (2.50m x 2.00m)

Fitted carpet, uPVC double-glazed window with fitted Venetian blind, coving, ceiling light, sockets and electric radiator.

Shower Room

7' 4" x 6' 0" (2.25m x 1.85m)

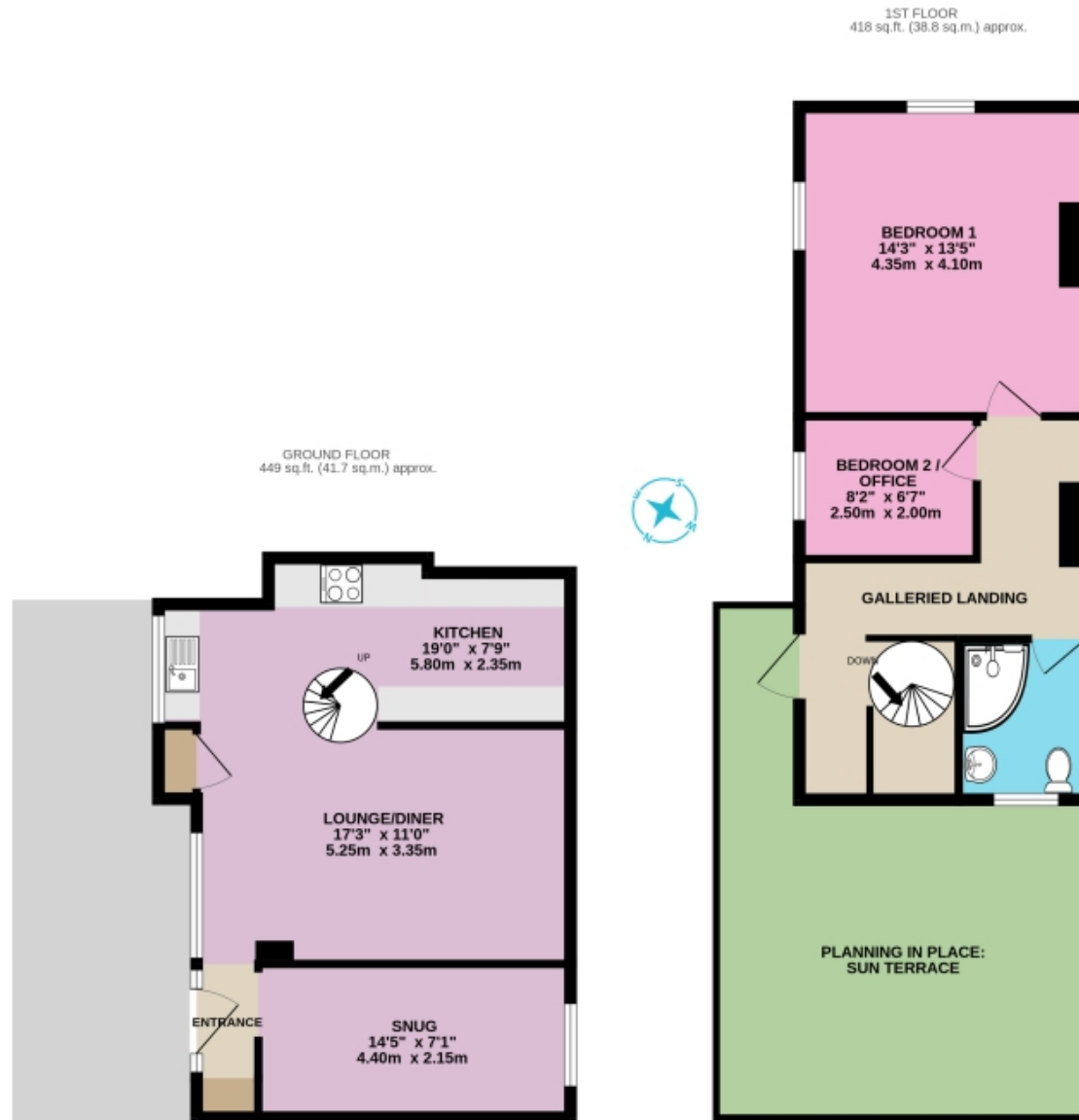
Tiled flooring, uPVC double-glazed window with fitted Venetian blind, tall heated towel rail, large corner shower with glass doors and floor-to-ceiling tiled walls, wash hand basin with splashback tiling, back-to-wall toilet, coving and ceiling light.

Galleried Landing

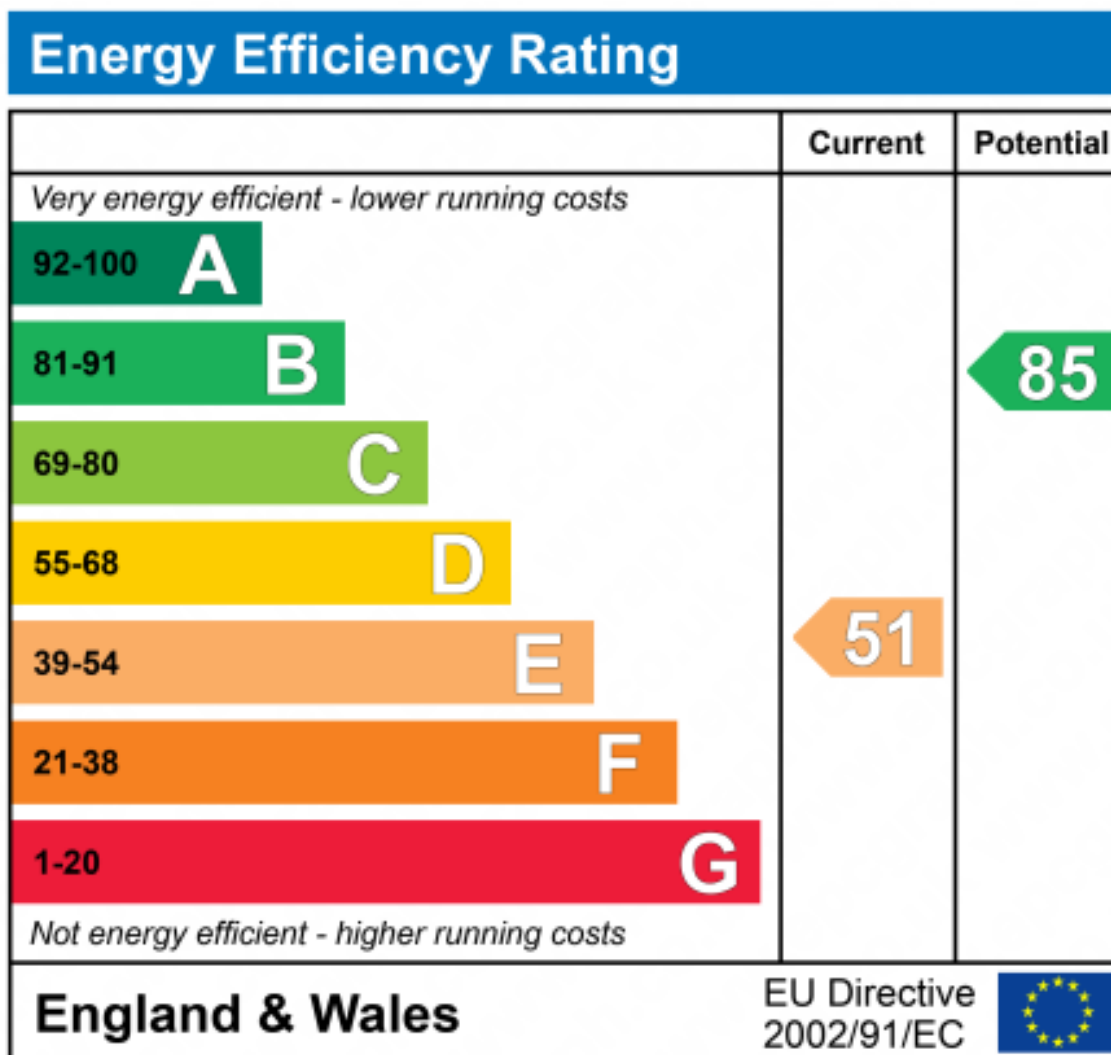
11' 1" x 8' 2" (3.40m x 2.50m)

Fitted carpet, uPVC double-glazed tilt and turn balcony door, radiator, coving, ceiling light and sockets.

Floorplans



Whilst every attempt has been made to ensure the accuracy of the floorplan contained here, measurements of doors, windows, rooms and any other items are approximate and no responsibility is taken for any error, omission or mis-statement. This plan is for illustrative purposes only and should be used as such by any prospective purchaser. The services, systems and appliances shown have not been tested and no guarantee as to their operability or efficiency can be given.
Made with Metsofix ©2024





Marketed by EweMove Wymondham

01953 665 785 (24/7)

wymondham@ewemove.com



EweMove
SALES AND LETTINGS